

ENVELOPE

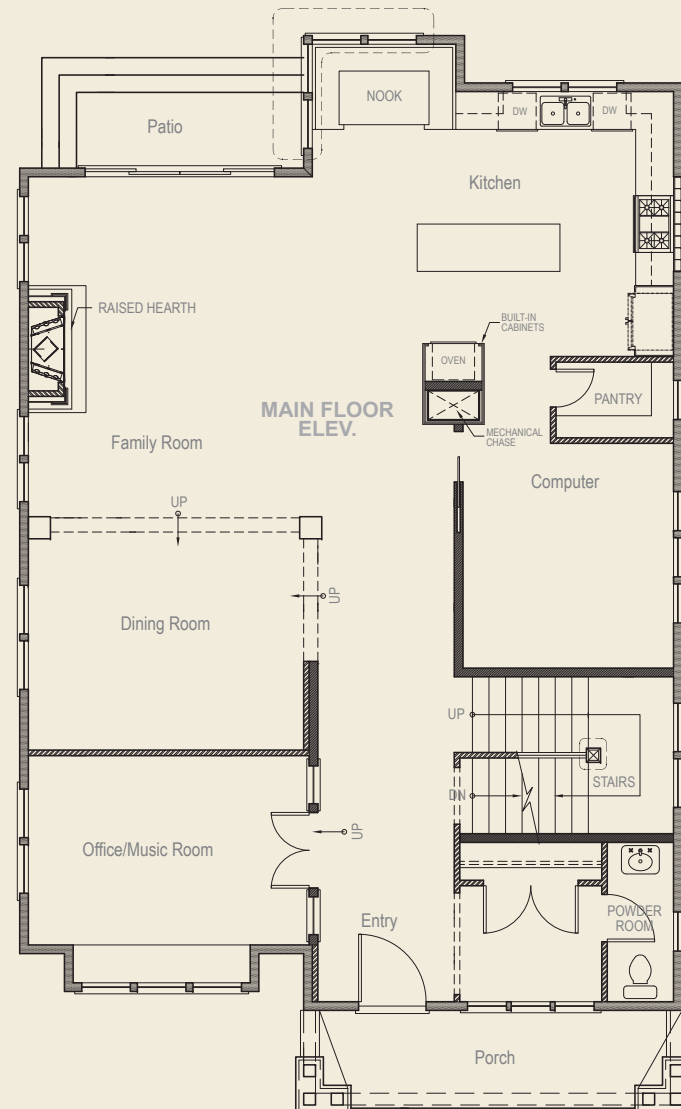
- Thermomass insulated foundation (R-20) keeps basement warm in winter while minimizing peak energy usage (thermal mass effect). Concrete is locally produced, and contains approx 50% reclaimed cement in the form of fly ash and slag
- 2x6 panelized wall construction allows thick insulation and makes home more solid
- Icynene spray foam insulation maximizes R-value while making the home airtight. Greatly reduces outside noise.
- Icynene applied to underside of roof yields tempered attic space, improving comfort and greatly reducing energy lost through attic ductwork.
- Additional ¼" layer of rigid foam insulation under siding reduces thermal bridging, improving envelope performance
- ZipWall System panels provide integral moisture barrier
- All cracks and seams meticulously sealed with low voc caulk for reduced air leakage and improved comfort
- Envelope performance verified using blower door test: 1861 CFM @50 pascal

CERTIFICATIONS

- LEED for Homes – U.S. Green Building Council
- NAHB / National Green Building Standard
- U.S. Department of Energy Builders Challenge
- EPA Indoor AirPLUS
- EPA EnergyStar for Homes

GENERAL INFORMATION

- 5 Bedrooms
- 5 ½ baths
- 4761 heated square feet
- Three story plus finished basement
- Lot Size: 5000 square feet
- Large one car garage
- Elementary School: Somerset
- Middle School: Westland
- High School: Bethesda Chevy Chase
- Walkscore of 91 – walk to Metro
- Preliminary HERS rating of 43
- Close to Bethesda Pool and Capital Crescent Trail
- Designed by Christian Gladu of The Bungalow Company, Bend OR



SPONSORS

BETHESDA BUNGALOWS would like to thank our very generous sponsors, whose support made The Incredibly Green Home possible.

LOCAL SUPPLIERS

- | | |
|-------------------------------|------------------------------|
| ■ Everyday Green | ■ Ferguson Appliances |
| ■ Elysian Energy | ■ Potomac Valley Surveys |
| ■ Second Chance of Baltimore | ■ Panas Construction |
| ■ Acker & Sons Plumbing | ■ Paintworx |
| ■ Barrons Lumber | ■ Marblex |
| ■ Bartley Corporation | ■ Drywall Systems |
| ■ Architectural Ceramics | ■ F & O Tile |
| ■ AC&R Insulation | ■ Keystone Valley Electric |
| ■ American Plant | ■ Outdoor Illuminations |
| ■ ARS HVAC of Laurel | ■ Norwood Marble & Granite |
| ■ EagleBank | ■ Rickman's Central Vacuum |
| ■ Standard Solar | ■ Jenson Fire Protection |
| ■ River Glass | ■ Beitzel Trim Service |
| ■ Myer Emco Audio Video | ■ John Shorb Landscaping |
| ■ Georgetown Capital Partners | ■ Steven Noble Illustrations |
| ■ Easterday Wells | ■ R & F Metals |
| ■ PJs Roofing | ■ Fabulous Finishes |
| ■ Select Floors of Rockville | ■ Pinnacle Waste |
| ■ Jiffy John | |

MANUFACTURERS:

- | | |
|--------------------------|--------------------------|
| ■ Enviroshake Roofing | ■ Icynene Insulation |
| ■ Thermomass Foundations | ■ Dow Building Solutions |
| ■ Lifespan Trim | ■ ICI / Dulux Paint |
| ■ Certainteed Drywall | ■ WaterFurnace |
| ■ LP Siding | ■ JELD-WEN Windows |
| ■ Kichler Lighting | ■ EcoTimber |
| ■ Trikeenan Tileworks | ■ Woodharbor Doors |
| ■ Overhead Garage Door | ■ Victory Woodworking |
| ■ Structural Systems | ■ Kohler Plumbing |

BETHESDA BUNGALOWS

5126 Fairglen Lane • Chevy Chase • MD 20815

T: 301.652.7299 • F: 301.656.2776

www.BethesdaBungalows.com

GREEN FEATURES

5133 Fairglen Lane
Chevy Chase
MD 20815



www.incrediblygreenhome.com

WELCOME

WELCOME

Welcome to The Incredibly Green Home of Chevy Chase. Bethesda Bungalows is proud to introduce this showcase model home of the latest green products, technologies and building methods. From the outset, we wanted this home to make a unique statement about what it means to be "GREEN", while...keeping true to our architectural roots. We felt the fusion of Frank Lloyd Wright and Asian design styles would be a perfectly Zen combination. And, of course, it had to be done with the quality and attention to detail that defines a Bethesda Bungalows home. We hope you enjoy the results!

PETER GUIDA
Bethesda Bungalows



EXTERIOR

1. 1.75Kw solar system by Standard Solar. Net metering feeds electricity back to the grid
2. Enviroshake recycled composite roof shingles, 95% recycled material
3. Siding - LP SmartSide with SmartGuard, resists fungal decay and termites
4. Trim - Lifespan FSC-certified Radiata Pine
5. FSC-certified Mahogany pillars and front door
6. EcoBuilt garage door by Overhead Garage Door - 88% recycled content and SCS-certified
7. Trex composite recycled decking - front and back porch
8. Dulux brand low-voc paint, beautiful and durable

LANDSCAPING

9. Permeable paver driveway, walkways and patio for reduced stormwater runoff
10. All plants and shrubs are drought tolerant, reducing water demand and maintenance
11. All plants are either native or non-invasive
12. Plant groups are zoned according to watering needs
13. Landscaping designed by Professional Landscape Designer of American Plant, Bethesda MD
14. EnergyStar exterior lighting with astronomical timer

INTERIOR

15. FSC-certified Brazilian Cherry floors
16. "ProRoc" mold resistant drywall by Certainteed
17. High efficiency dual-flush toilet by Kohler
18. Dulux brand no-voc paint
19. Woodharbor brand interior paint-grade doors - 40% recycled content
20. Tile by Trikeenan Tileworks, made within 500 mile radius
21. High performance windows by Jeld-Wen, Low-E, argon filled
22. LED recessed lights by CREE - highly efficient, dimmable with beautiful warm color. Designed to last 50,000 hours.
23. Control4 home automation system with color touchpanel provides lighting control, house audio and more.
24. Reclaimed glass from 100 year-old farmhouse
25. Teragren bamboo countertops and built-ins customized by Victory Woodworking of Canaan NH
26. Icestone recycled glass countertop, 70% recycled content
27. Cambria natural quartz countertop, Greenguard Indoor Air Quality certified product, made in USA
28. EnergyStar appliances
29. FSC-certified Brazilian Cherry stairs and railings
30. Lifespan interior trim - FSC-certified Radiata Pine
31. Low Voc finishes on all wood surfaces
32. Humidistats in all baths for controlling humidity and reducing mold and mildew
33. Vacuflo central vacuum system for improved indoor air quality
34. Prewired for plug-in electric vehicle
35. Cork flooring by Wicanders, renewable resource. Keeps floors warm in winter and absorbs sound
36. Reclaimed American Elm pillars in home theater - from tree formerly in front yard
37. Reclaimed White Oak flooring in home theater
38. Reclaimed antique soapstone utility sink

HVAC SYSTEM

39. Geothermal heat pump system captures free, renewable energy from (2) 450 foot deep wells.
 - a. One unit of energy input yields 5 units output
 - b. EPA considers geothermal to be the most efficient type of forced air HVAC system.
 - c. Features (2) top-of-the-line WaterFurnace Envision series for maximum efficiency and reliability
 - d. Extremely quiet operation with no outside units
 - e. MERV 13 filters for improved air quality
 - f. Four zone system ensures comfort throughout the home
40. Renewaire Energy Recovery Ventilator provides fresh filtered air throughout home while minimizing energy loss
41. Mastic-sealed ductwork ensures maximum airflow while saving energy
42. Geothermal system creates hot water as a byproduct

